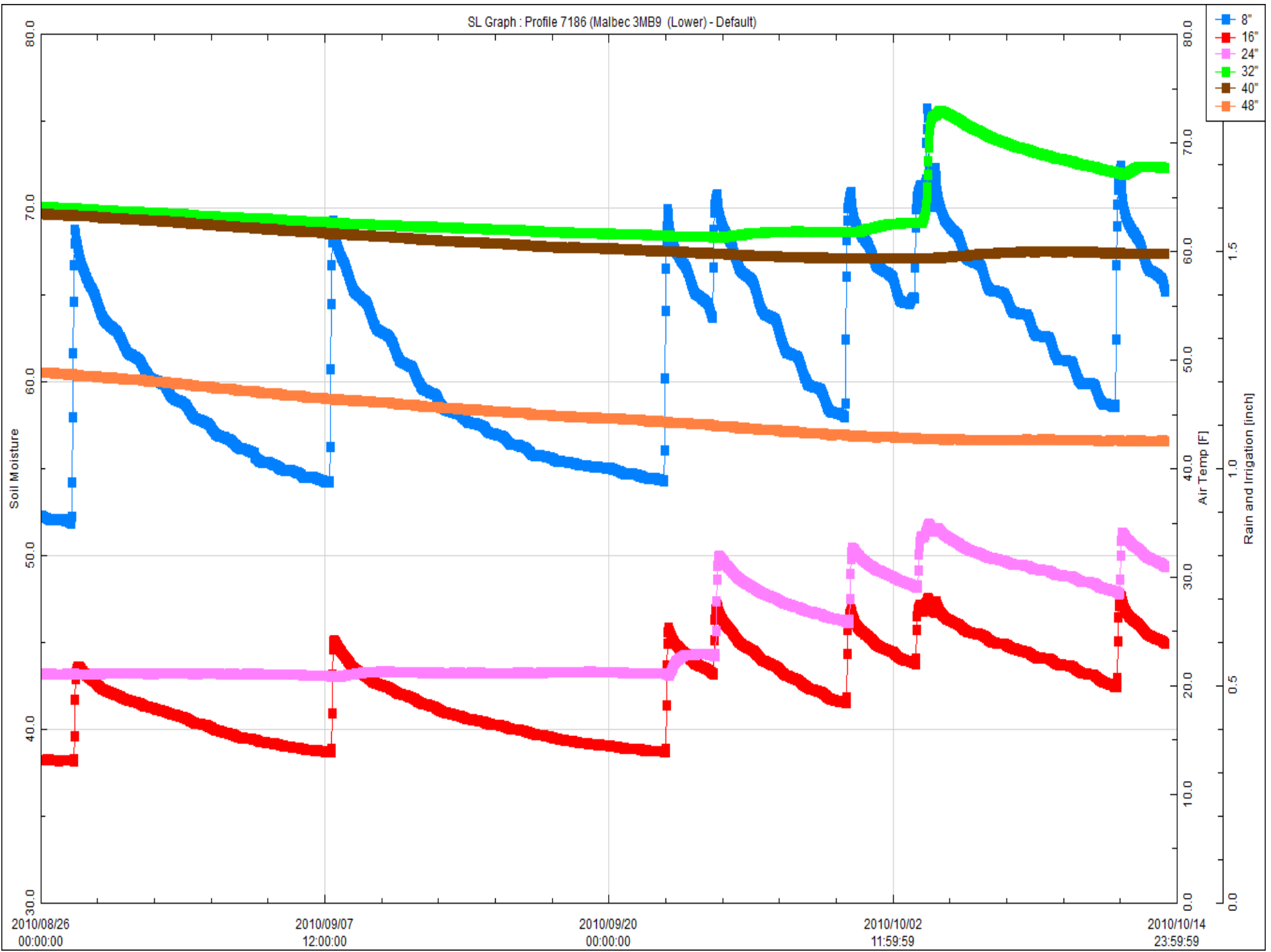
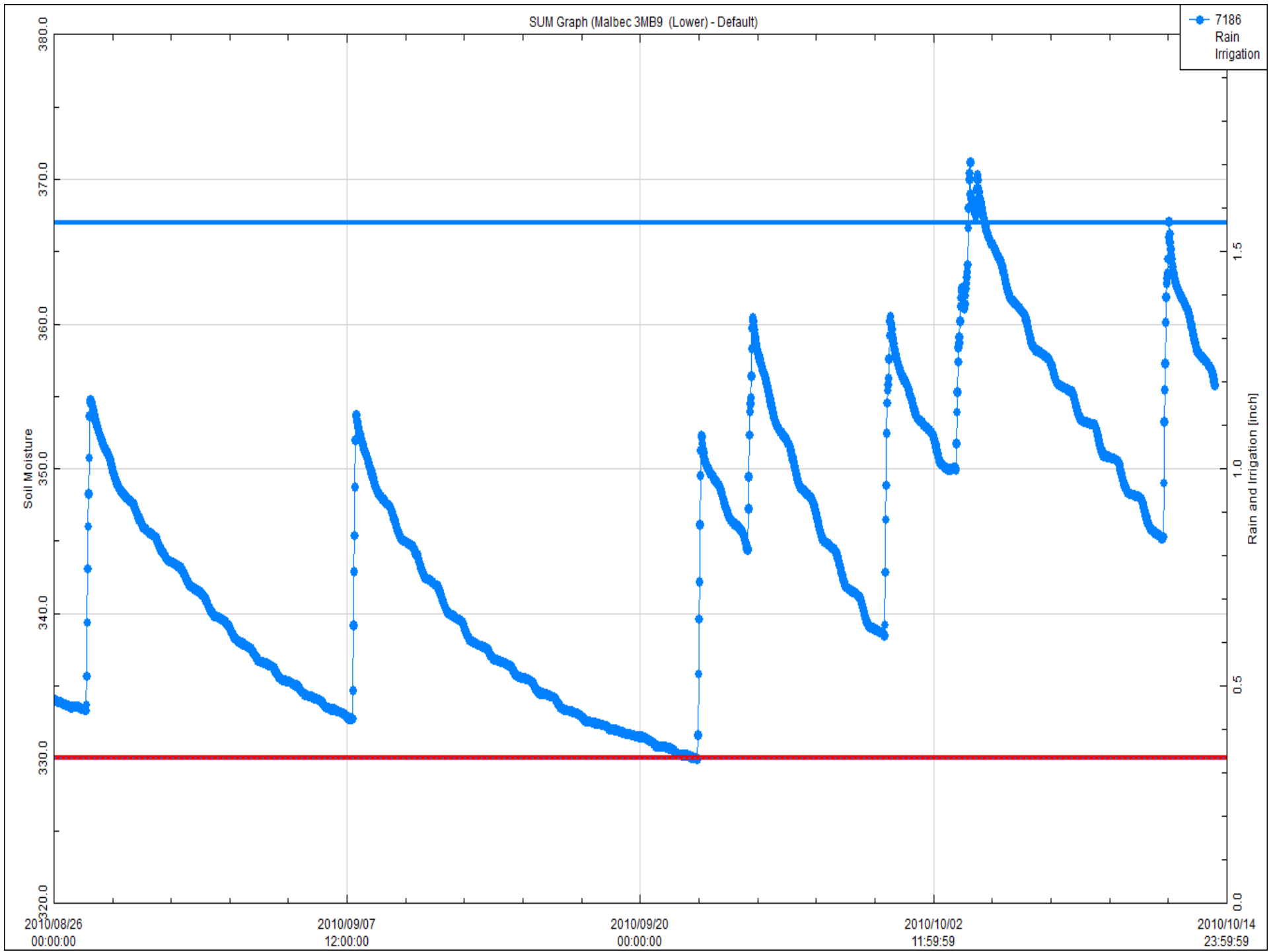
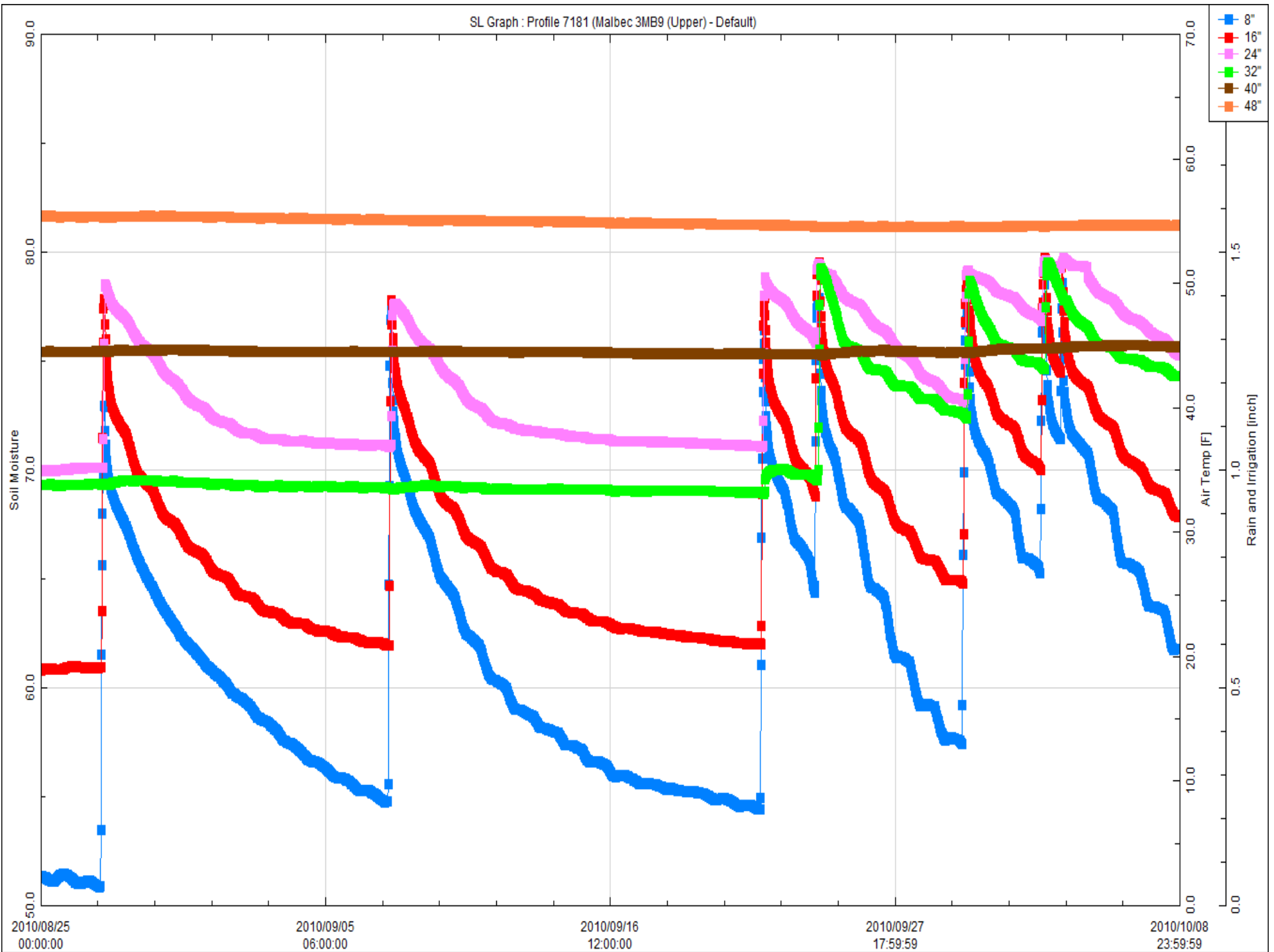


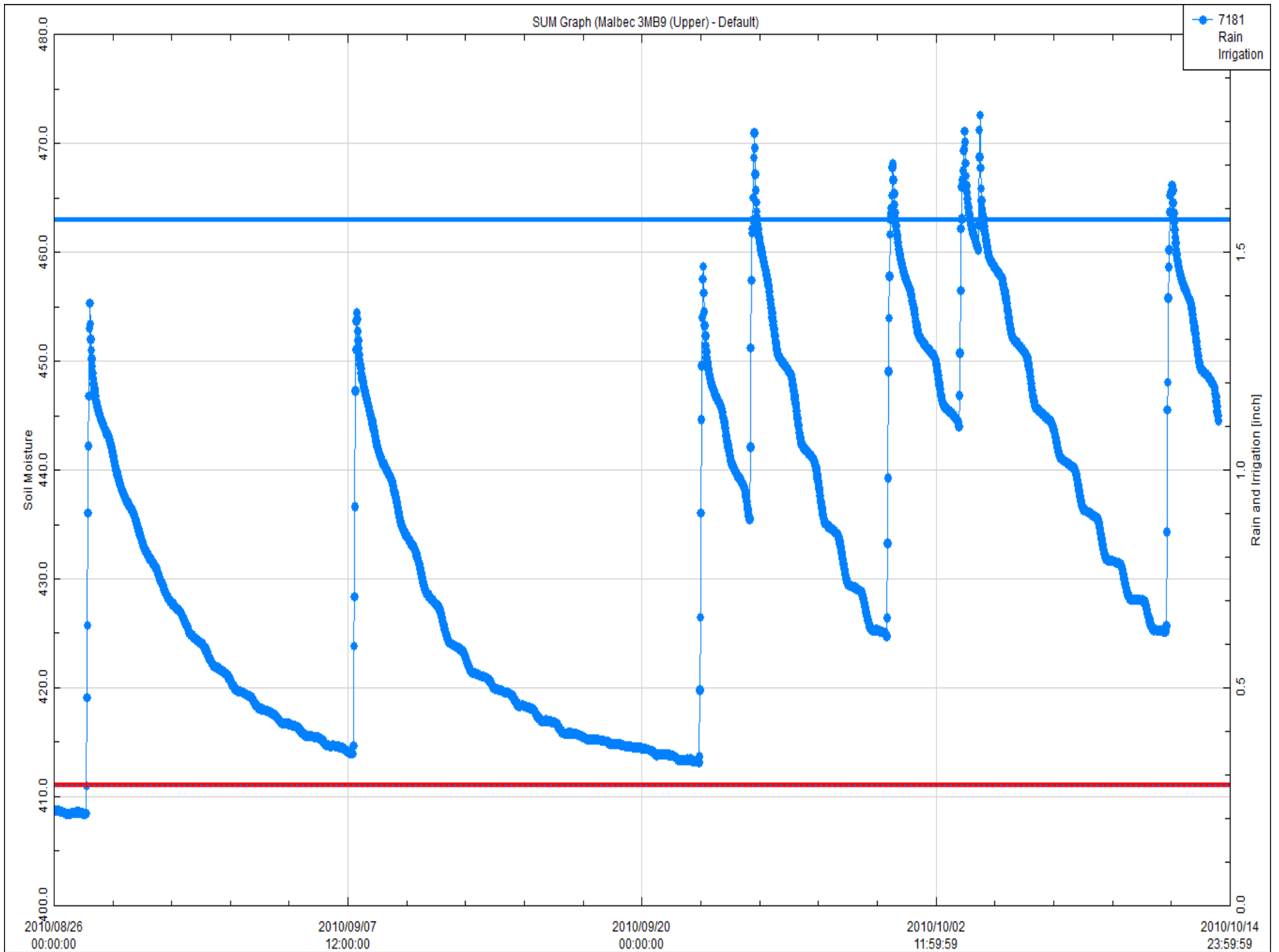
SL Graph : Profile 7186 (Malbec 3MB9 (Lower) - Default)



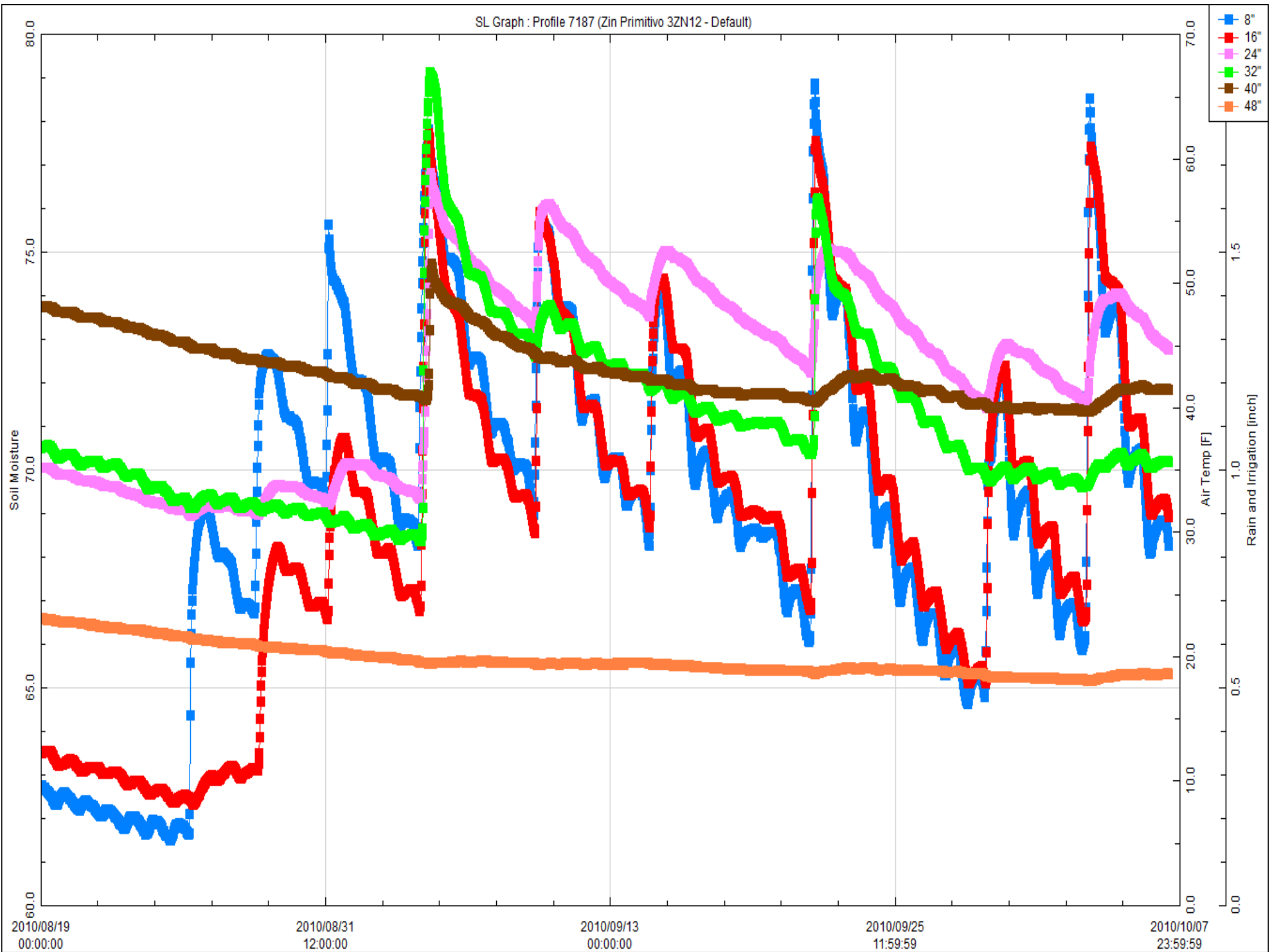


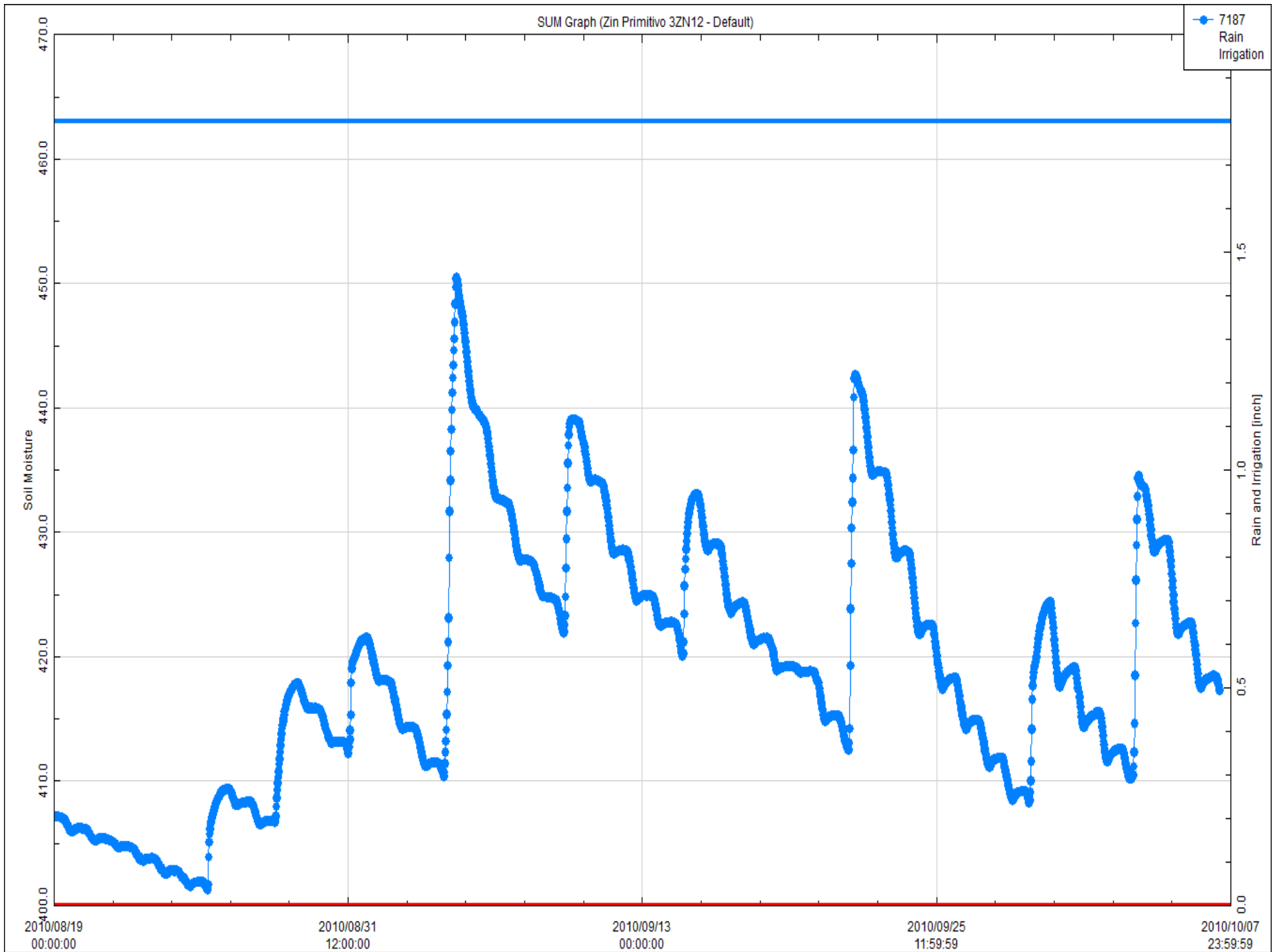
SL Graph : Profile 7181 (Malbec 3MB9 (Upper) - Default)





SL Graph : Profile 7187 (Zin Primitivo 3ZN12 - Default)





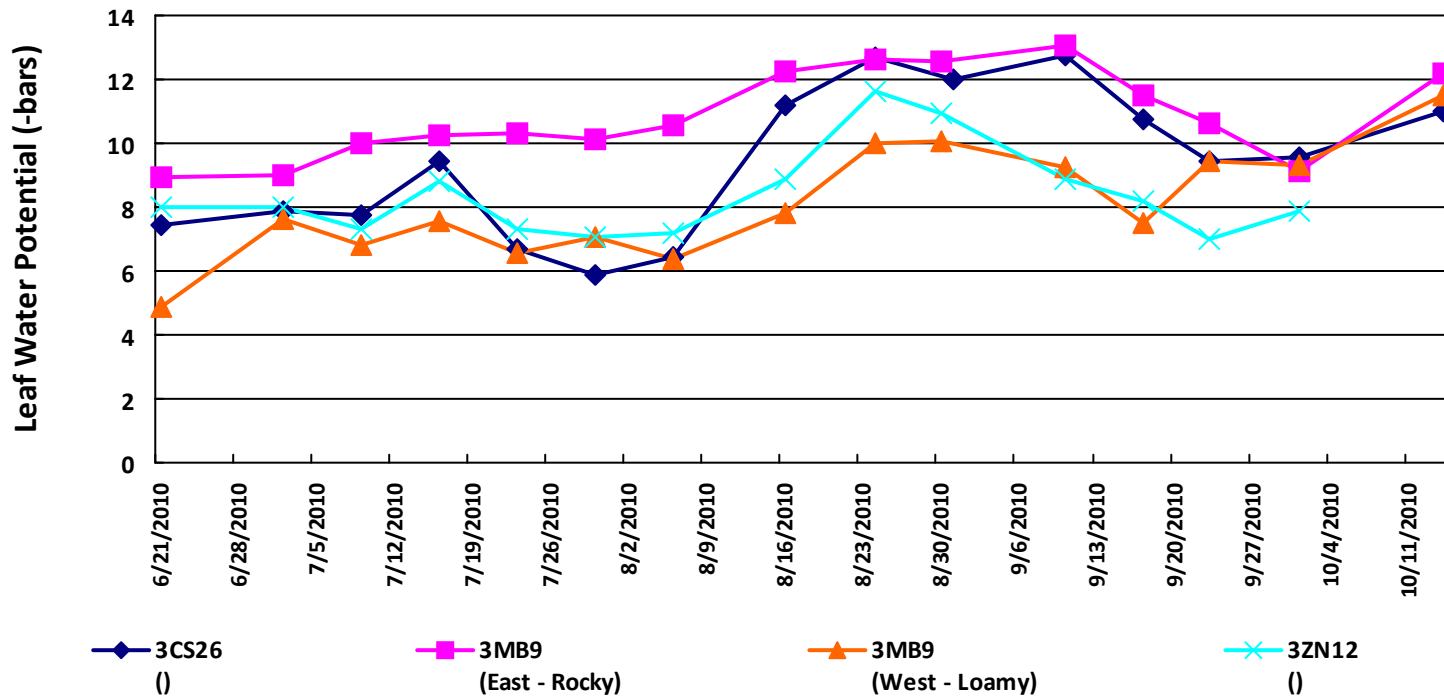
# MEASURED VINE WATER STATUS

ADVANCED VITICULTURE, LLC    WWW.ADVANCEDVIT.COM    707.838.3805

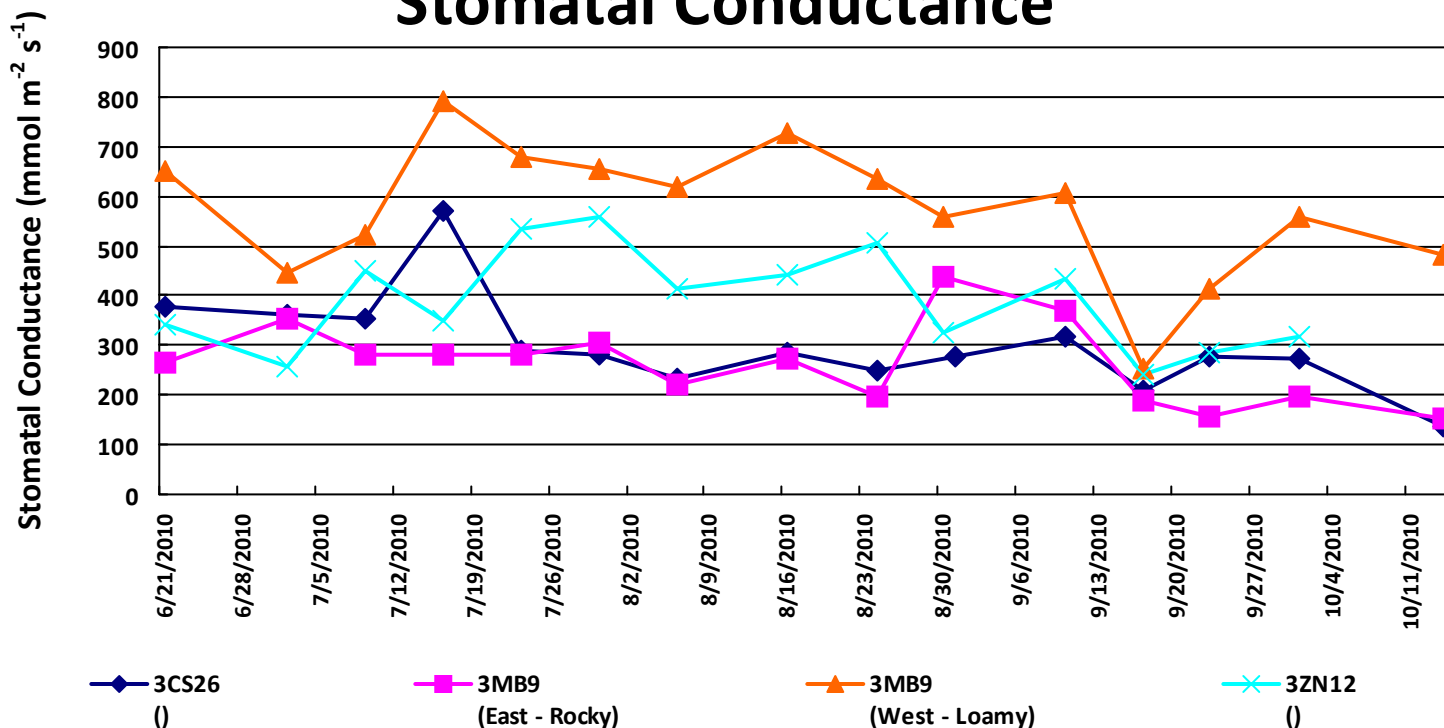


## Kunde - Wildwood

### Leaf Water Potential



### Stomatal Conductance



# MEASURED VINE WATER STATUS



ADVANCED VITICULTURE, LLC    WWW.ADVANCEDVIT.COM    707.838.3805

Vineyard	Block	Sub Block	Variety	Date	Gs	LWP
Kunde - Wildwood						
	3CS26 ()		Cabernet sauvignon			
				6/21/2010	377	-7.4
				7/2/2010	360	-7.9
				7/9/2010	353	-7.7
				7/16/2010	569	-9.4
				7/23/2010	290	-6.7
				7/30/2010	282	-5.9
				8/6/2010	234	-6.4
				8/16/2010	285	-11.2
				8/24/2010	249	-12.7
				8/31/2010	279	-12.0
				9/10/2010	316	-12.8
				9/17/2010	207	-10.8
				9/23/2010	276	-9.4
				10/1/2010	273	-9.5
				10/14/2010	135	-11.0
	3MB9 (East - Rocky)		Malbec			
				6/21/2010	265	-8.9
				7/2/2010	354	-9.0
				7/9/2010	282	-10.0
				7/16/2010	282	-10.2
				7/23/2010	280	-10.3
				7/30/2010	304	-10.1
				8/6/2010	223	-10.6
				8/16/2010	272	-12.3
				8/24/2010	198	-12.6
				8/30/2010	437	-12.6
				9/10/2010	368	-13.1
				9/17/2010	189	-11.5
				9/23/2010	158	-10.6
				10/1/2010	198	-9.2
				10/14/2010	153	-12.2
	3MB9 (West - Loamy)		Malbec			
				6/21/2010	649	-4.9
				7/2/2010	447	-7.6
				7/9/2010	524	-6.8
				7/16/2010	790	-7.5
				7/23/2010	681	-6.6
				7/30/2010	655	-7.0
				8/6/2010	618	-6.4
				8/16/2010	725	-7.8
				8/24/2010	636	-10.0
				8/30/2010	560	-10.0
				9/10/2010	608	-9.3
				9/17/2010	253	-7.5
				9/23/2010	416	-9.5
				10/1/2010	559	-9.3
				10/14/2010	482	-11.5

Gs is stomatal (leaf pore) conductance and its units are  $\text{mmol m}^{-2} \text{s}^{-1}$ . LWP is leaf water potential (water column tension) and its units are bars. Green numbers indicate potentially luxurious moisture levels, while yellow indicates pending stress and red indicates stressed levels.

# MEASURED VINE WATER STATUS

ADVANCED VITICULTURE, LLC

WWW.ADVANCEDVIT.COM

707.838.3805



Vineyard	Block	Sub Block	Variety	Date	Gs	LWP
	3ZN12 ()		Zinfandel			
				6/21/2010	343	-8.0
				7/2/2010	258	-8.0
				7/9/2010	448	-7.3
				7/16/2010	350	-8.8
				7/23/2010	533	-7.3
				7/30/2010	560	-7.1
				8/6/2010	413	-7.2
				8/16/2010	443	-8.9
				8/24/2010	506	-11.6
				8/30/2010	324	-10.9
				9/10/2010	434	-8.9
				9/17/2010	243	-8.2
				9/23/2010	283	-7.0
				10/1/2010	316	-7.9

Gs is stomatal (leaf pore) conductance and its units are  $\text{mmol m}^{-2} \text{s}^{-1}$ . LWP is leaf water potential (water column tension) and its units are bars. Green numbers indicate potentially luxurious moisture levels, while yellow indicates pending stress and red indicates stressed levels.